



Professional Services

System Integration Packages

Breathe easy knowing your Vyaire products are cared for by our expert team of service professionals.

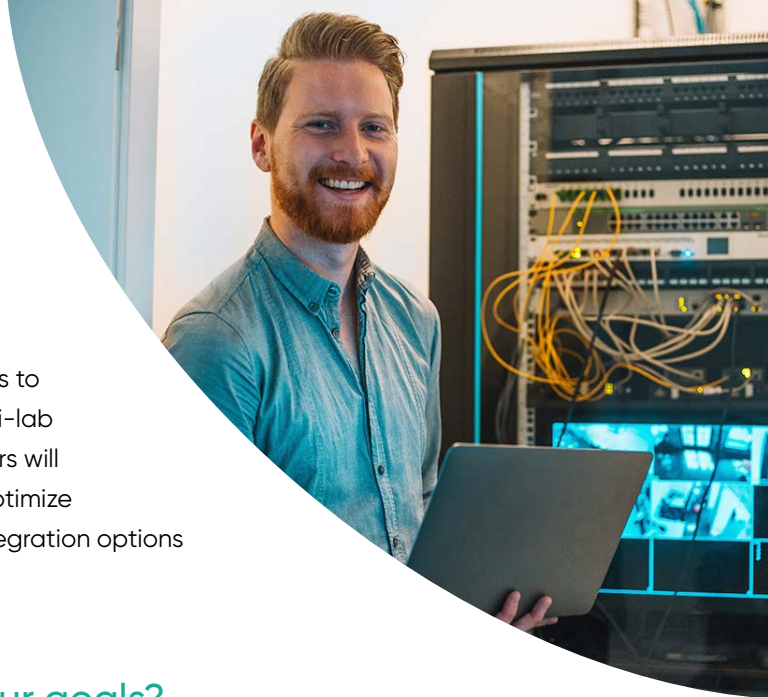
SERVICE



Professional Services

System Integration Packages

Integrating your Vyaire devices with a network database or your electronic medical record (EMR) system will improve cybersecurity and transform your team's efficiency. We offer integration packages to support varied needs and budgets, from physicians' offices to multi-lab environments. Our highly skilled Professional Services team members will collaborate with you, your IT team, and project management to optimize success of your lab, institution, or practice as you consider your integration options and move forward with implementation.



Which type of integration best fits with your goals?

Network Integration

- Share patient data, predicted sets, and reports across devices
- Eliminate routing paper reports for review
- Gain electronic signature capability
- Create scalability for growth by networking your environment

Workflow Integration

- Includes Network Integration entitlements
- Interface with your EMR system
- Send ADT or orders to Vyaire equipment
- Send results with PDF or discrete data to the EMR

Compare packages on the next page

Which add-ons¹ will further improve your workflow?

- Mobile Review
- Data migration from non-Vyaire devices
- SentrySuite[®] review station
- 5-pack of custom reports
- Custom interpretation templates
- Sentry CIS Data Cube

Maximize the capabilities of our best-in-class devices with system integration.

Improve cybersecurity

Store data within your data center, ensuring secure data with controlled access and backups. Encrypt passwords and data in transit. Automatically create SentrySuite users from your active directory.

Support standardization and scalability

Standardize reports and predicted sets across devices and locations. Read studies from multiple locations via review stations or Mobile Review, and gain an improved view of trends. Add new devices into your established environment as you grow.

Improve efficiency and accuracy

With an Interface Workflow Integration, send orders from your EMR to the testing device and send reports back to the patient record, eliminating manual data entry, risk of errors, and paper pushing.

Your Sales Consultant can help you choose an integration package that best aligns with your budget and workflow goals.



Package Benefits	Network Integration		Workflow Integration		
	Basic	Advanced	Basic	Advanced	Premium
WORKFLOW					
SQL database	•	•	•	•	•
Standard SentrySuite workflow	•	•	•	•	•
SentrySuite workflow consultation and customization				•	•
PREDICTED SETS					
Standard predicted sets	•	•	•	•	•
Custom predicted sets		•		•	•
REPORTS					
SentrySuite standard reports library	•	•	•	•	•
Custom report header (logo) and custom report footer (patient name, MRN, visit date)		•		•	•
Custom reports		up to 5		up to 5	up to 10
INTERFACE					
Inbound: ADT or Orders			•	•	•
Outbound: result message with PDF			•	•	•
Outbound: discrete data elements					•
FACILITATOR-LED WEB-BASED TRAINING²					
Advanced workflow training			•	•	•
Introduction to report designer training				•	•
Predicted editing and comment templates training				•	•
OTHER ITEMS					
Project management	•	•	•	•	•
Role-based security	•	•	•	•	•
Test environment license			•	•	•
Administrative station license				•	•

Footnotes

1. Fees for the additional options listed are not included in the price of the integration packages. Additional charges will apply.
2. Each web-based training program is one hour long and includes one instance of training. The target audience for training includes, for example, Lead Respiratory Therapists, Super Users, and/or Medical Directors. Charges will apply for additional instances of training.

Scope of Services Policy

Additional charges will apply under the following circumstances:

- It is discovered that additional work, which is outside the scope of the integration package benefits, is required to complete the project.
- The Customer requests additional customization, which is outside the scope of the integration package benefits.
- Project work is performed during normal business hours, Monday through Friday, 7:00 am to 7:00 pm Central Time. If the customer requests that project work be performed after hours, over the weekend, or on Vyaire company holidays, those hours will be billed separately at the after-hours/weekend/holiday Professional Services hourly rate.

**Contact your
Sales Consultant
for more information
about our Service Solutions.**

**Contact our Service Teams for support at:
1.800.231.2466**

GLOBAL HEADQUARTERS

Vyaire Medical, Inc.
26125 North Riverwoods Blvd
Mettawa, IL 60045 USA

vyaire.com

For US distribution only.
© 2021 Vyaire. Vyaire, the Vyaire logo and all other trademarks or registered trademarks are property of Vyaire Medical, Inc., or one of its affiliates. VYR-US-2100329 2.0

